

It is five minutes of the foot in a sacred place and the temple of the world heritage.

Zip code: 321-1432  
Yasukawa-cho 6-48, Nikko, Tochigi, Japan  
TEL +81-288-54-1010 FAX +81-288-54-0557  
<http://www.senhime.co.jp/>



Nikko senhime-monogatari is a traditional Japanese style.



The view from a lounge shows a beautiful season.



### Senhime kaiseki dinner

Basic dinner course of Senhime Monogatari.  
Enjoy our stylish Japanese cuisine and showy appearance of French style cooking.



### Selective breakfast

You can choose breakfast menu when you check-in.



### Japanese restaurant Orihime

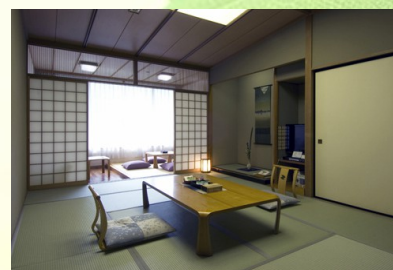


Dinner party for both small and big group.  
You will feel as if you are in a compartment.

You will enjoy atmosphere of Senhime's original hospitality.

### Rooms

All guestrooms face to the river side.  
Young greenish mountains in the spring, cool breeze on the river in the summer, autumnal leaves and snowy natural view in the winter. Those seasonal views will entertain you.  
Also, guestrooms are relaxing space, where you will feel traditional Japanese beauty.



### Japanese style room

A standard guestroom. All rooms face South, and Mt.Nakimushi and stream of Daiya river are visible through the windows.

Also, there is an extra room in all guestrooms.

(Japanese tatami room, porch, bath and toilet)



### With open-air bath

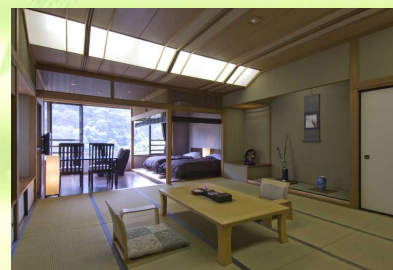
Mt. Nakimushi's natural green will surrounds you and make you relax.

Why don't you try a room with open-air bath  
Mental relaxation in the open-air bath in your guestroom after the physical healing in the public bathroom,

This open-air bath faces to Mt. Nakimushi and Daiya river. Breezing on the mountains will please you and heal your travel fatigue.

"Easier travel"...How does it sound

(Tatami room + alcove + open-air bath, 4 guests availabl)



### Deluxe guest room

Previous special room is partially renewed as a higher grade guestroom.

A relaxing Japanese style room, functioning bedroom, and massage chair are equipped.

You will be able have a meal on the dining table.

No, you don't have to sit upright with your legs folded under one.

Especially, having breakfast is strongly recommended.

25m2 width room, twin bed room, dining room, bathroom and toilet



### Twin

A Western style simple guestroom facing forest of the Toshogu shrine.

Room rate is relatively reasonable comparing to wider guestrooms.

Western twin room, 24m2, bathroom and toilet



## SPA



**Open-air bath and Wood deck** (Man and Women)

You will be healed both mentally and physically in simple alkaline hot spring by stretching out your legs. The seasonal view, in the Japanese garden style open-air bath, will entertain you.



**Public bathroom** (Man and Women)

The simple alkaline hot spring is rather soft even for children and sensitive skin. It is also known as "spring for beautiful skin". Please enjoy moving scene fully, while you feel Nikko's natural beauty by 5 senses.

## RELAXATION



## Esthetic & Spa "Nikko-Bijin"

Relax from the bottom of your heart in the plentiful nature. Clean water and valiant air will reduce your daily pressure. Be beautiful from your inner body.

●Enzyme Bath 3,240yen/20min. ●Facial Treatment 4,860yen~ ●Body Treatment 7,560yen~



### Oriental Treatment

Let's get rid of your fatigue!  
Marvelous effect on your body.  
It is surprisingly different from other massages.

2,500yen/20min  
5,000yen/40min



### Aromatherapy Reflexology

British style remedy by therapeutic foot massage.  
Be in the aroma oil, and enjoy popular foot massage.

1,300yen/10min  
2,600yen/20min  
3,900yen/30min

## Souvenir shop Tamatebako



## Bar, ramen noodles Menkui-hime



## Club "KOKONOE"



## Optional Tour

### World Heritage Tour(With English-speaking guide)



Rinno-ji Temple Ticket/400yen Toshogu Shrine(kara-mon) Ticket/1,300yen

Futara-san Shrine

Guide charges(Time: Approximately two hours)

One person ~ four people 8,000yen Five people~ten people 10,000yen 11 people ~15,000yen

## Natural Park Tour Departure : Daily

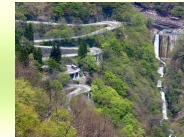
Nikko Half Day Tour by bus

《Part 1》Enjoy visiting rich nature in Inner Nikko Pricing Adult:3,200yen Child:1,600yen

●Nikko Senhime Monogatari Pick-up9:35/Return12:35 Pick-up14:00/Return17:00

### Visited spots

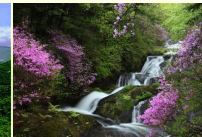
●Iroha-zaka Slopes ●Akechi-daira Plateau ●Lake Chuzenji ●Ryuzu Falls ●Chuzenji Temple  
●Kegon Falls ●Hoto Falls & Hanya Falls



Iroha-zaka Slopes



Lake Chuzenji



Ryuzu Falls



Kegon Falls



Chuzenji Temple

《Part 2》Experience unknown tourist attraction in Nikko Pricing Adult:2,200yen Child:1,100yen

●Nikko Senhime Monogatari Pick-up14:10/Return16:30

### Visited spots

●Kanman-ga-Fuchi & Bake-Jizo (ghost jizo) ●Kaizan-Doh ●Takino'o Shrine ●Kirifuri Falls



Kanman-ga-Fuchi & Bake-Jizo (ghost jizo)



Kaizan-Doh



Takino'o Shrine



Kirifuri Falls